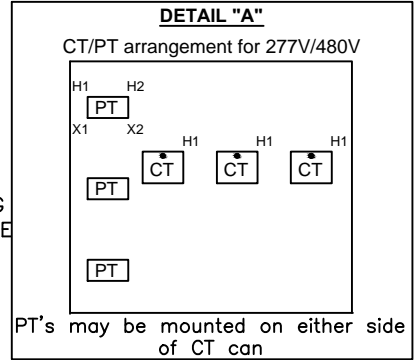
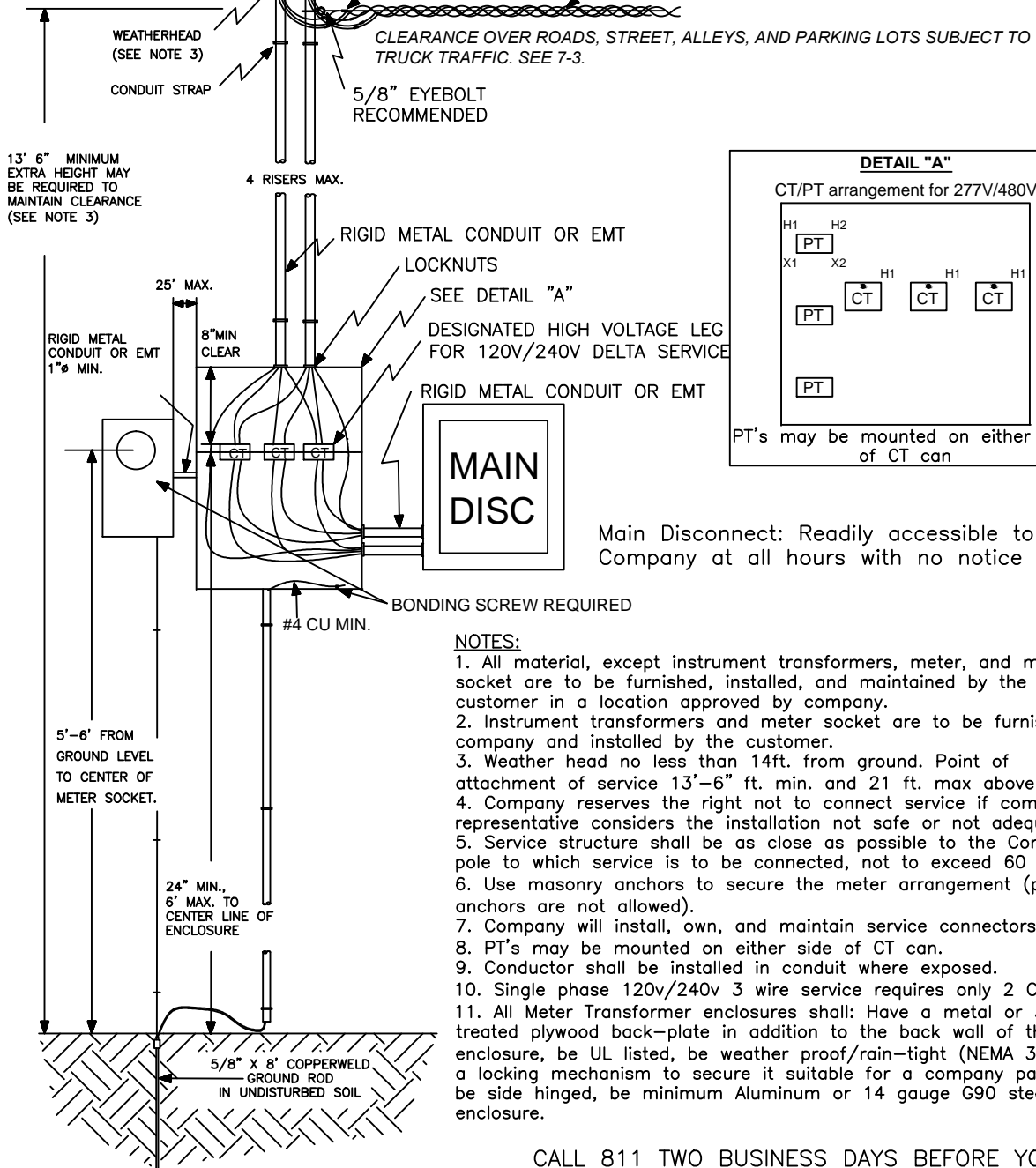


SERVICE ENTRANCE CONDUCTORS
MINIMUM LENGTH 3'
BEYOND WEATHERHEAD

DIVISION OF OWNERSHIP
AT CONNECTOR

911 address shall be a minimum 3" lettering marked on meter enclosure, pole, or durable material attached to pole and should be visible from street. (See section 3.4)

COMPANY SERVICE CABLE



Main Disconnect: Readily accessible to Company at all hours with no notice

NOTES:

1. All material, except instrument transformers, meter, and meter socket are to be furnished, installed, and maintained by the customer in a location approved by company.
2. Instrument transformers and meter socket are to be furnished by company and installed by the customer.
3. Weather head no less than 14ft. from ground. Point of attachment of service 13'-6" ft. min. and 21 ft. max above ground.
4. Company reserves the right not to connect service if company representative considers the installation not safe or not adequate.
5. Service structure shall be as close as possible to the Company pole to which service is to be connected, not to exceed 60 ft.
6. Use masonry anchors to secure the meter arrangement (plastic anchors are not allowed).
7. Company will install, own, and maintain service connectors.
8. PT's may be mounted on either side of CT can.
9. Conductor shall be installed in conduit where exposed.
10. Single phase 120v/240v 3 wire service requires only 2 CTs.
11. All Meter Transformer enclosures shall: Have a metal or 3/4" treated plywood back-plate in addition to the back wall of the enclosure, be UL listed, be weather proof/rain-tight (NEMA 3R), have a locking mechanism to secure it suitable for a company padlock, be side hinged, be minimum Aluminum or 14 gauge G90 steel enclosure.

CALL 811 TWO BUSINESS DAYS BEFORE YOU DIG

In locations with underground facilities, the Customer shall notify One Call and shall have One Call locate all underground facilities before digging. It shall be the responsibility of the Customer to stay clear of all underground facilities.

TABLE 9.1.3: GUIDELINE FOR METER TRANSFORMER ENCLOSURE WITH MULTIPLE CIRCUITS

Total Customer Conduits (4" min)	Maximum Conductor Size	Minimum Dimensions		
		Depth	Width	Height
Up to 4	600 kcmil	14"	32"	40"
Up to 6	500 kcmil	14"	32"	54"

CTs will be placed at center. Customer Conduit spaced evenly. Service connections shall not be made in an instrument transformer enclosure. For larger sizes, consult the Company.

ENTERGY SERVICES, INC.			
CURRENT INSTRUMENT TRANSFORMER FOR OVERHEAD SERVICE			
APPROVED BY:	JRH	DATE:	11/15/2012
CHECKED BY:	JED	SCALE:	NONE
DRAWN BY:	krich95	CEA NO.	
		No. D9-6	
NO.	DATE:	PLOT 1=1	SH. 1 OF 1

2	06/15/17	Revised drawing and notes as needed.	ERG
1	10/12	REVISION OF DRAWING SS11.8-3	JED
NO.	DATE:	REVISION	BY: APPR: